

home8 Interactive Security System

Quickstart Guide

Model No. H12015

What's inside:



1x Security Shuttle



1x Mini Cube HD Camera



1x Infrared Motion Sensor



1x Power Adapter



1x Power Adapter



1x Double-Sided Tape



1x Ethernet Cable



1x Power Cable



1x Battery (CR123A)



1x USB Thumbdrive



2x Mounting Accessories



1x External Siren



2x Door + Window Sensors



1x Keychain Remote



6x Mounting Accessories



4x Double-Sided Tapes



1x Double-Sided Tape



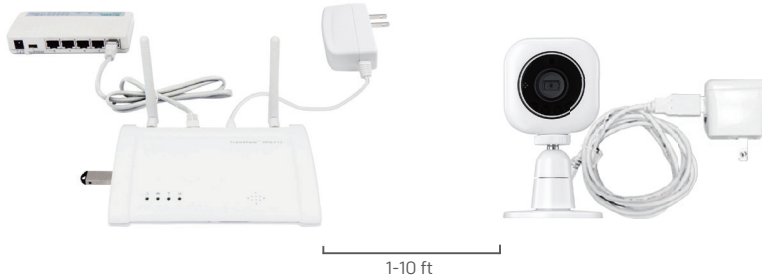
2x Batteries (CR123A)

Broadband internet connection, iOS or Android phone and home router required.

Étape 1 : Assemblez votre matériel

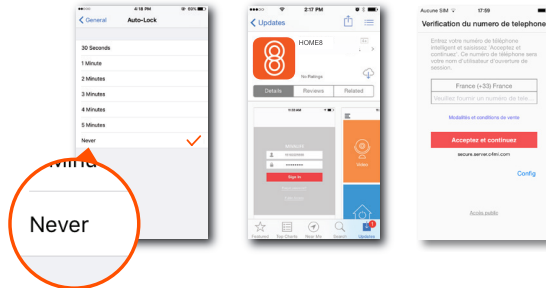
Déballiez tout votre matériel à une distance de 30 cm à 3 m de votre routeur domestique.

- Connectez la capsule de sécurité à votre routeur DHCP avec le câble d'Ethernet inclus.
- Connectez la capsule de sécurité et la caméra Mini Cube HD aux adaptateurs de puissance et branchez-les.
- Ajoutez les piles à vos capteurs de porte et fenêtre et de mouvement.
- Branchez la sirène externe à une sortie.



Étape 2 : Configurez votre smartphone

Votre téléphone perturbera le processus d'installation s'il se met en mode de veille. Ainsi avant de registrer vos dispositifs, désactivez le dispositif de blocage automatique de votre smartphone. Vous pouvez le réactiver après avoir configuré votre système.



Ensuite:

- Connectez votre smartphone à votre Wi-Fi domestique.
- Téléchargez l'application Home8 de l'App Store ou de Google Play.
- Suivez les instructions de sur-écran et établissez votre compte.

Étape 3 : Montez vos dispositifs

Avant de monter vos capteurs, vérifiez s'ils sont dans le champ de portée de la Capsule de Sécurité.

- Placez vos capteurs dans les salles où vous voulez les utiliser.
- Ouvrez la couverture des piles de chaque dispositif que vous voulez installer.

Si vous recevez un avis qui indique que votre dispositif a été modifié, il est dans le champ de portée.

Replacez la couverture des piles et montez le dispositif avec les vis incluses ou le ruban adhésif à double face.

- Branchez la sirène externe à une sortie.
- Appuyez sur le bouton **d'urgence** dans l'écran principal de l'application Home8 pour envoyer une notification de secours.

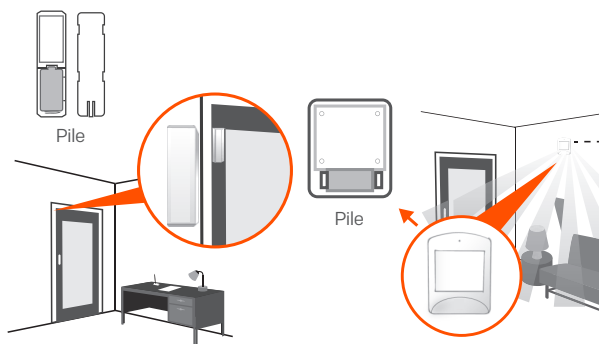
Si votre sirène externe retentit, le dispositif est dans la plage de la portée, et vous pouvez monter la sirène.

Votre sirène externe est livrée avec une batterie de secours préinstallée. Pour se servir de la batterie de secours, tirer et enlever la bande de plastique pour initier le contact de la batterie.

Avant de monter vos caméras.

- Placez-les dans les salles où vous voulez les utiliser et branchez-les.
- Attendez que vos caméras se connectent.

Si vous voyez la vidéo, fixez vos caméras et appréciez.



How can I backup recorded video?

You can backup your recorded video by using any of the following methods.

- By setting automatic backup to Dropbox. (Dropbox account needed)
- By sharing your recorded video from VideoGram to your appointed method.

How do I retrieve my Home8 Mobile app password?

Go to the sign-in page of your Home8 app and tap "Forgot password?". Follow the instruction on screen to enter your phone number. You will then receive an access code via SMS. After input an Access Code that App requested, you can then reset the password by yourself. You will also receive a confirmation email after successfully reset your password.

How can I be certain my personal information is secured?

Our first level of security is authentication and your password is encrypted when you sign in to your account. At the next level where all data is transmitted, including videos, images, as well account information, bank-level AES data encryption is used.

How can I be sure unauthorized people are unable to look at my videos on the cloud?

With your privacy in mind, all data is encrypted with bank-level security, and each user has his/her own account to access the video. Our system alerts you and your authorized users when it detects login attempts from unauthorized smart devices.

How many locations can I manage from my Home8 app?

Home8 app is built to support multi-location management. You can manage as many locations as you would like, and we do not place a limit on the number of Home8 Systems you can purchase.

If I lose my smart device, what should I do to protect my Home8 account?

We recommend you to change your password as soon as possible by using other smart device with Home8 app installed to sign in to your account to make the change to your password. Alternatively, you may also contact us to disable your account for you.

Is there a place I can view the user manual online?

Yes, visit www.home8alarm.com/download , and then access user manuals.

What are the requirements prior to purchasing an Home8 System?

Because Home8 System is a fully IoT interactive system, it will require the following:

- Broadband Internet connection. (dial-up connections are not supported)
- DHCP enabled router with an available LAN port.
- Smart devices with internet connection.

What can I do if a camera is offline?

If a camera is showing as "offline", try power cycle on the camera first and wait approximately two minutes, if the offline situation persists, try moving the camera closer to the Security Shuttle and power cycle the device again. After tried the methods above, if the offline status is still not resolved, please contact our Technical Support for further troubleshooting assistance.

What can I do if my system is offline?

First, try checking your internet connection, if the connection is working properly, then unplug the network cable from your Security Shuttle for 10 seconds, and then reconnect it. If the Security Shuttle is still offline after 5 minutes, please contact our Technical Support for further troubleshooting assistance.

Troubleshooting Tips

Are your devices listed in your app?

If you're having trouble installing your devices, see if they're listed in your Home8 app:

- Navigate to ☰ > **Device Management** to see if all your devices are listed.
- Tap + next to the device category and follow the on-screen instructions to add any missing devices.

Are your devices communicating with Security Shuttle?

- If your devices don't connect to Security Shuttle, they might be too far away. Take them to a location that's closer to Security Shuttle and try again.
- If they do connect, you'll know the range of your device and where to install a range extender.
- Alternatively, you can move Security Shuttle closer to your device.
- If your devices still don't communicate with Security Shuttle, even when they're in the same room, navigate to ☰ > **Device Management** > + on the Home8 app to add your devices again.

Do you need to reset your camera?

If your camera isn't communicating with Security Shuttle, your app may ask you to reset your camera.

- Locate the pinhole on the left side of the camera.
- Insert a pin and hold for 3-5 seconds until you hear a beep.
- Return to the app and follow the onscreen instructions.

Need help installing your Home8 system?

<http://www.home8alarm.com/download/>
support-global@home8systems.com



99200239MIG