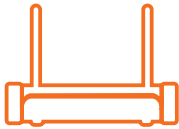


home8

AlarmShield Interactive Security System Quickstart Guide

Model No. OPG2204

What's inside:



1x Security Shuttle



2x Door + Window Sensors



1x Infrared Motion Sensor



1x Power Adapter



4x Double-Sided Tapes



1x Double-Sided Tape



1x Ethernet Cable



2x Batteries (CR123A)



1x Battery (CR123A)



1x External Siren



2x Keychain Remotes



6x Mounting
Accessories



1x Double-Sided
Tape

Broadband internet connection, iOS or Android phone and home router required.

Passo 1: Monte seu hardware

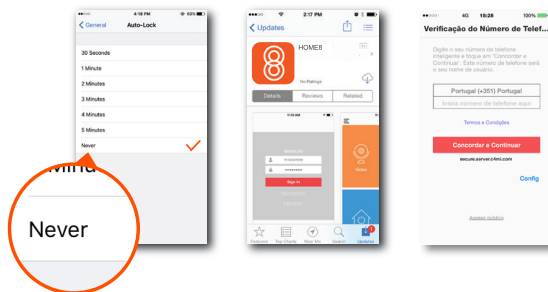
Desembale todo hardware a uma distância de 3 metros de seu router doméstico.

- Conecte o Shuttle de Segurança ao router activado para DHCP com o incluso Cabo de Ethernet.
- Conecte o Shuttle de Segurança adaptadores de energia e ligue-o.
- Adicione baterias ao Sensor de Porta + Janela e Movimento.
- Conecte o Sirene externa a uma tomada.



Passo 2: Configure seu Smartphone

Seu telemóvel irá interromper o processo de configuração se entrar em modo de hibernação. Logo, antes de registrar seus aparelhos, desabilite a função de bloqueio automático em seu smartphone. Poderás habilitá-lo depois de configurar seu sistema.



Próximo:

- Conecte seu smartphone ao Wi-Fi doméstico.
- Descarregue o aplicativo Home8 da loja de aplicativos ou Google Play.
- Siga as instruções da tela e configure a conta.

Passo 3: Instale seus acessórios

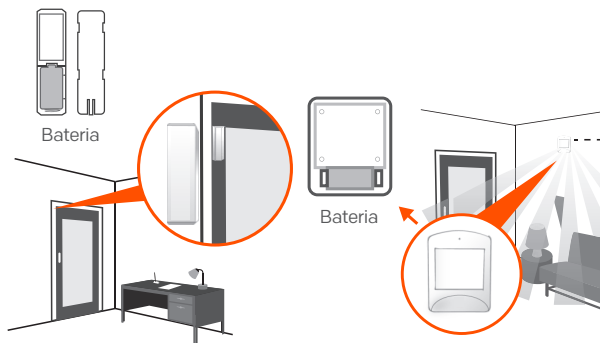
Antes de montar os sensores, observe se estão dentro do alcance do Shuttle de Segurança.

- Coloque os sensores nos sítio onde deseja utilizar.
- Abra a tampa da bateria de cada aparelho que queiras instalar.

Se recibes noificação indicado adulteração do aparelho, ela está dentro do alcance. Substitua a tampa da bateria e monte seu aparelho com os parafusos indicados ou fita dupla face.

- Conecte o Sirene externa a uma tomada.
- Toque no botão de **Emergência** na tela principal do Aplicativo Home8 para enviar uma notificação de emergência.

Se a Sirene Externa for acionada, está dentro do alcance, você pode instalar a sirene. Sua Sirene Externa vem com uma bateria sobressalente instalada. Para utilizar a bateria sobressalente, puxe e remova a fita de plástico para iniciar contato das baterias.



How do I retrieve my Home8 Mobile App password?

Go to the sign in page of your Home8 app and tap "Forgot password?". Follow the instruction on screen to enter your phone number. You will then receive an access code via SMS. After input an Access Code that App requested, you can then reset the password by yourself. You will also receive a confirmation email after successfully reset your password.

How can I be certain my personal information is secured?

Our first level of security is authentication and your password is encrypted when you sign in to your account. At the next level where all data is transmitted, including videos, images, as well account information, bank-level AES data encryption is used.

How can I be sure unauthorized people are unable to look at my videos on the cloud?

With your privacy in mind, all data is encrypted with bank-level security, and each user has his/her own account to access the video. Our system alerts you and your authorized users when it detects login attempts from unauthorized smart devices.

How many locations can I manage from my Home8 App?

Home8 app is built to support multi-location management. You can manage as many locations as you would like, and we do not place a limit on the number of Home8 Systems you can purchase.

If I lose my smart device, what should I do to protect my Home8 account?

We recommend you to change your password as soon as possible by using other smart device with Home8 app installed to sign in to your account to make the change to your password. Alternatively, you may also contact us to disable your account for you.

Is there a place I can view the user manual online?

Yes, visit www.home8alarm.com/download , and then access user manuals.

What are the requirements prior to purchasing an Home8 System?

Because Home8 System is a fully IoT interactive system, it will require the following:

- Broadband Internet connection. (dial-up connections are not supported)
- DHCP enabled router with an available LAN port.
- Smart devices with internet connection.

What can I do if my system is offline?

First, try checking your internet connection, if the connection is working properly, then unplug the network cable from your Security Shuttle for 10 seconds, and then reconnect it. If the Security Shuttle is still offline after 5 minutes, please contact our Technical Support for further troubleshooting assistance.

Troubleshooting Tips

Are your devices listed in your app?

If you're having trouble installing your devices, see if they're listed in your Home8 app:

- Navigate to ☰ > **Device Management** to see if all your devices are listed.
- Tap + next to the device category and follow the on-screen instructions to add any missing devices.

Are your devices communicating with Security Shuttle?

- If your devices don't connect to Security Shuttle, they might be too far away. Take them to a location that's closer to Security Shuttle and try again.
- If they do connect, you'll know the range of your device and where to install a range extender.
- Alternatively, you can move Security Shuttle closer to your device.
- If your devices still don't communicate with Security Shuttle, even when they're in the same room, navigate to ☰ > **Device Management** > + on the Home8 app to add your devices again.

Need help installing your Home8 system?

[http://www.home8alarm.com/download/
support-global@home8systems.com](http://www.home8alarm.com/download/support-global@home8systems.com)



99200254MIG