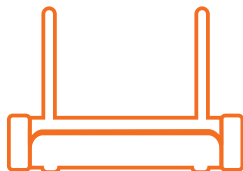


# home8

## Mini Cube HD Camera 2-Pack System Quickstart Guide

Model No. V12021

### What's inside:



**1x Security Shuttle**



**2x Mini Cube HD Cameras**



**1x External Siren**



1x Power Adapter



2x Power Adapters



6x Mounting Accessories



1x Ethernet Cable



2x Power Cables



1x Double-Sided Tape



1x USB Thumbdrive



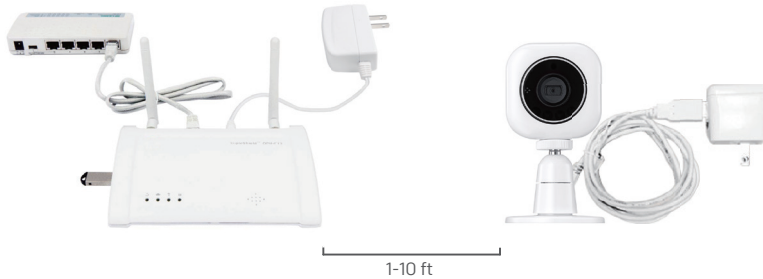
4x Mounting Accessories

Broadband internet connection, iOS or Android phone and home router required.

## Step 1: Assemble your hardware

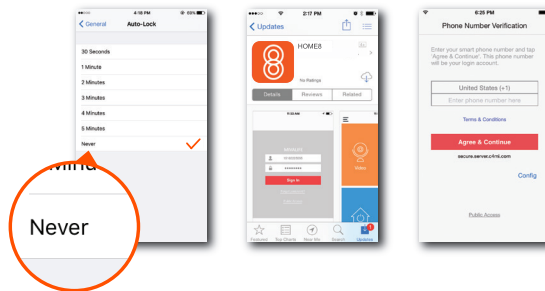
Unpack all of your hardware within 1-10 feet of your home router.

- Connect Security Shuttle to your DHCP-enabled router with the included Ethernet Cable.
- Connect Security Shuttle and Mini Cube HD cameras to power adapters and plug them in.
- Plug the External Siren into an outlet.



## Step 2: Set up your smartphone

Your phone will disrupt the setup process if it goes to sleep. So before you register your devices, disable the autolock feature on your smartphone. You can enable it after you've set up your system.



**Next:**

- Connect your smartphone to your home Wi-Fi.
- Download the Home8 app from the App Store or Google Play.
- Follow the on-screen instructions and set up your account.

### Step 3: Mount your devices

**Before you mount your cameras, see if they're within Security Shuttle's range.**

- Take your cameras to the room you want to install them in.
- Open the app, tap **Video**.

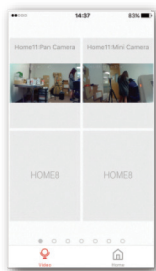
If you see video, you can mount the camera.

**Before you mount your Sensors.**

- Plug the External Siren into an outlet.
- Tap the **Emergency** button in the main screen of the Home8 App to send an emergency notification.

If your External Siren sounded, it's within range, you can mount the siren.

Your External Siren comes with a backup battery preinstalled. To make use of the backup battery, pull and remove the plastic strip to initiate battery contact.



## How can I backup recorded video?

You can backup your recorded video by using any of the following methods.

- By setting automatic backup to Dropbox. (Dropbox account needed)
- By sharing your recorded video from VideoGram to your appointed method.

## How do I retrieve my Home8 Mobile app password?

Go to the sign-in page of your Home8 app and tap "Forgot password?". Follow the instruction on screen to enter your phone number. You will then receive an access code via SMS. After input an Access Code that App requested, you can then reset the password by yourself. You will also receive a confirmation email after successfully reset your password.

## How can I be certain my personal information is secured?

Our first level of security is authentication and your password is encrypted when you sign in to your account. At the next level where all data is transmitted, including videos, images, as well account information, bank-level AES data encryption is used.

## How can I be sure unauthorized people are unable to look at my videos on the cloud?

With your privacy in mind, all data is encrypted with bank-level security, and each user has his/her own account to access the video. Our system alerts you and your authorized users when it detects login attempts from unauthorized smart devices.

## How many locations can I manage from my Home8 app?

Home8 app is built to support multi-location management. You can manage as many locations as you would like, and we do not place a limit on the number of Home8 Systems you can purchase.

## If I lose my smart device, what should I do to protect my Home8 account?

We recommend you to change your password as soon as possible by using other smart device with Home8 app installed to sign in to your account to make the change to your password. Alternatively, you may also contact us to disable your account for you.

## Is there a place I can view the user manual online?

Yes, visit [www.home8alarm.com/download](http://www.home8alarm.com/download) , and then access user manuals.

## What are the requirements prior to purchasing an Home8 System?

Because Home8 System is a fully IoT interactive system, it will require the following:

- Broadband Internet connection. (dial-up connections are not supported)
- DHCP enabled router with an available LAN port.
- Smart devices with internet connection.

## What can I do if a camera is offline?

If a camera is showing as "offline", try power cycle on the camera first and wait approximately two minutes, if the offline situation persists, try moving the camera closer to the Security Shuttle and power cycle the device again. After tried the methods above, if the offline status is still not resolved, please contact our Technical Support for further troubleshooting assistance.

## What can I do if my system is offline?

First, try checking your internet connection, if the connection is working properly, then unplug the network cable from your Security Shuttle for 10 seconds, and then reconnect it. If the Security Shuttle is still offline after 5 minutes, please contact our Technical Support for further troubleshooting assistance.

# Troubleshooting Tips

## Are your devices listed in your app?

If you're having trouble installing your devices, see if they're listed in your Home8 app:

- Navigate to ☰ > **Device Management** to see if all your devices are listed.
- Tap + next to the device category and follow the on-screen instructions to add any missing devices.

## Are your devices communicating with Security Shuttle?

- If your devices don't connect to Security Shuttle, they might be too far away. Take them to a location that's closer to Security Shuttle and try again.
- If they do connect, you'll know the range of your device and where to install a range extender.
- Alternatively, you can move Security Shuttle closer to your device.
- If your devices still don't communicate with Security Shuttle, even when they're in the same room, navigate to ☰ > **Device Management** > + on the Home8 app to add your devices again.

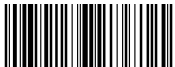
## Do you need to reset your camera?

If your camera isn't communicating with Security Shuttle, your app may ask you to reset your camera.

- Locate the pinhole on the left side of the camera.
- Insert a pin and hold for 3-5 seconds until you hear a beep.
- Return to the app and follow the onscreen instructions.

## Need help installing your Home8 system?

<http://www.home8alarm.com/download/>  
[support-global@home8systems.com](mailto:support-global@home8systems.com)



99200241MIG